

VENELLI – KRAMER Architetti

Via Pisani Dossi 5-A  
22100 Como ITALIA

+39 031 570779

+39 031 576605

info@venellikramer.com

Indirizzo

Telefono

Fax

e-mail



## COMUNE DI MOLTRASIO

### PROGETTO PER IL NUOVO LUNGOLAGO CAMPO 2 MOLTRASIO

#### PROGETTO DEFINITIVO

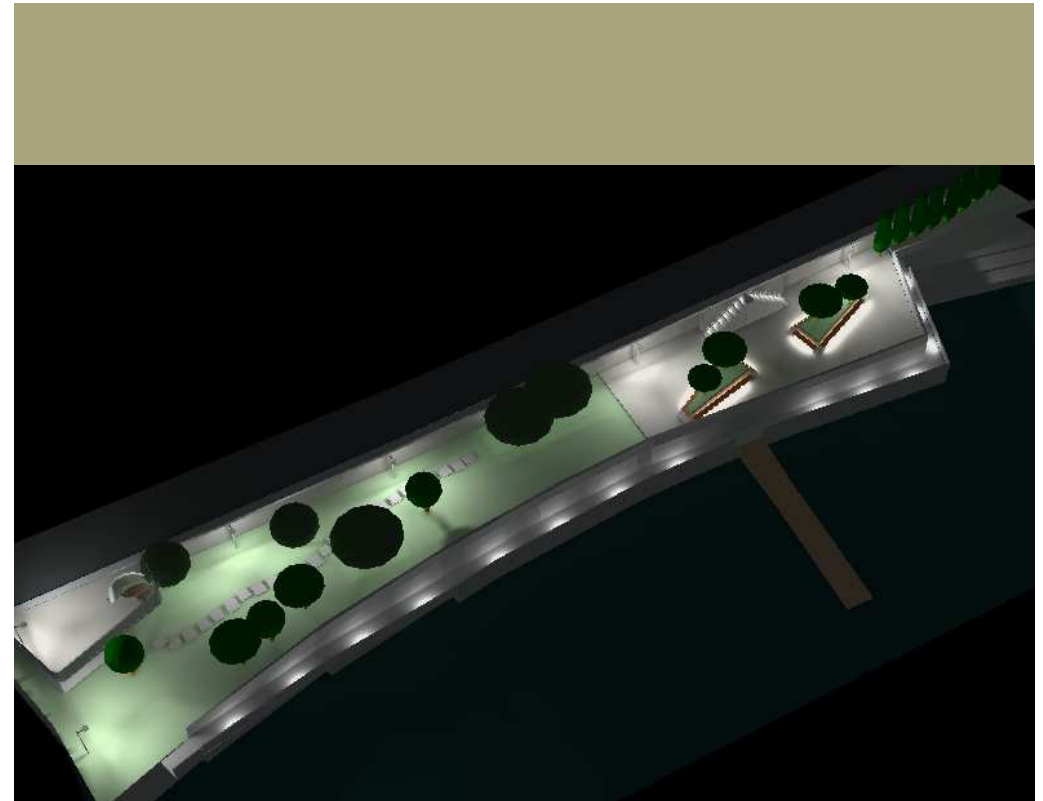
(Decreto legislativo 18 aprile 2016, n. 50–Codice dei contratti pubblici)

---

**PRESENTAZIONE PROGETTO ILLUMINOTECNICO  
AREA ESTERNA E SALA POLIFUNZIONALE**

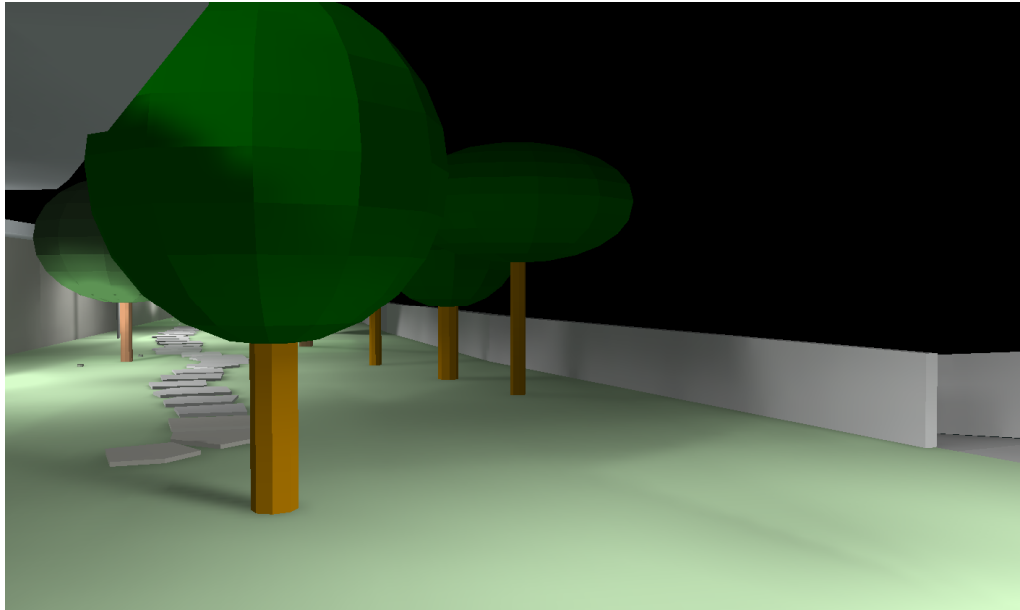
---

1. LUNGOLAGO DALL'ALTO 1)



2. LUNGOLAGO DALL'ALTO 2)

3. DALL'EDIFICIO ZONA PARCO



4. PERCORSO PEDONALE

5. SOTTOILLUMINAZIONE CHIOME ALBERI



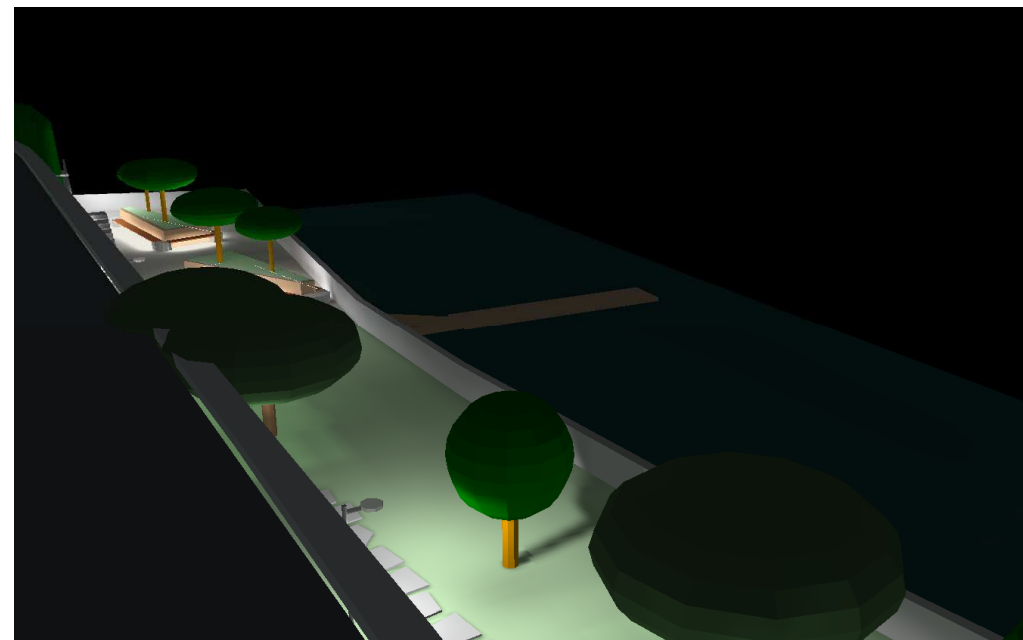
6. PERCORSO PEDONALE FRONTE LAGO

7. VISTA DALLA PIAZZETTA



8. VISTA CAMMINAMENTO ALTO E  
CAMMINAMENTO BASSO

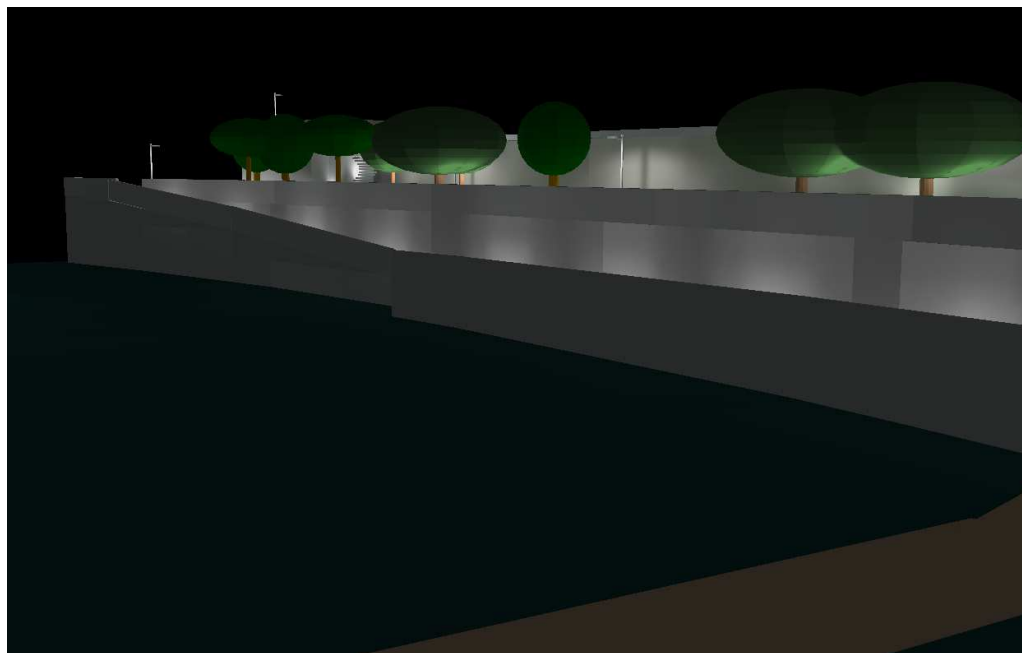
9. VISTA AREA SOSTA PAVIMENTATA



10. VISTA DALLA STRADA VIA REGINA



11. DAL NUOVO PONTILE

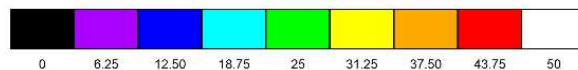
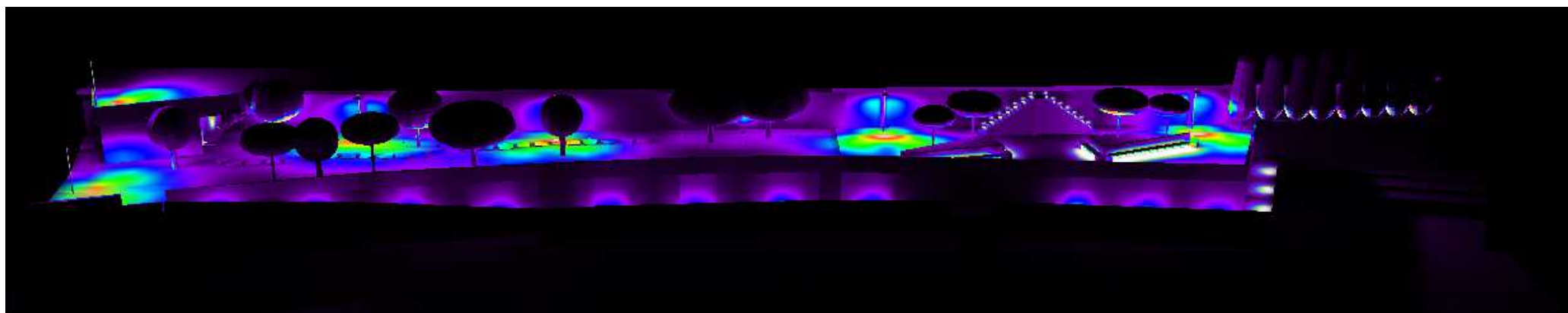


12. DAL LAGO



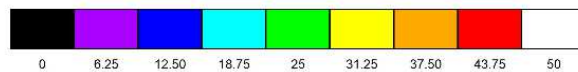
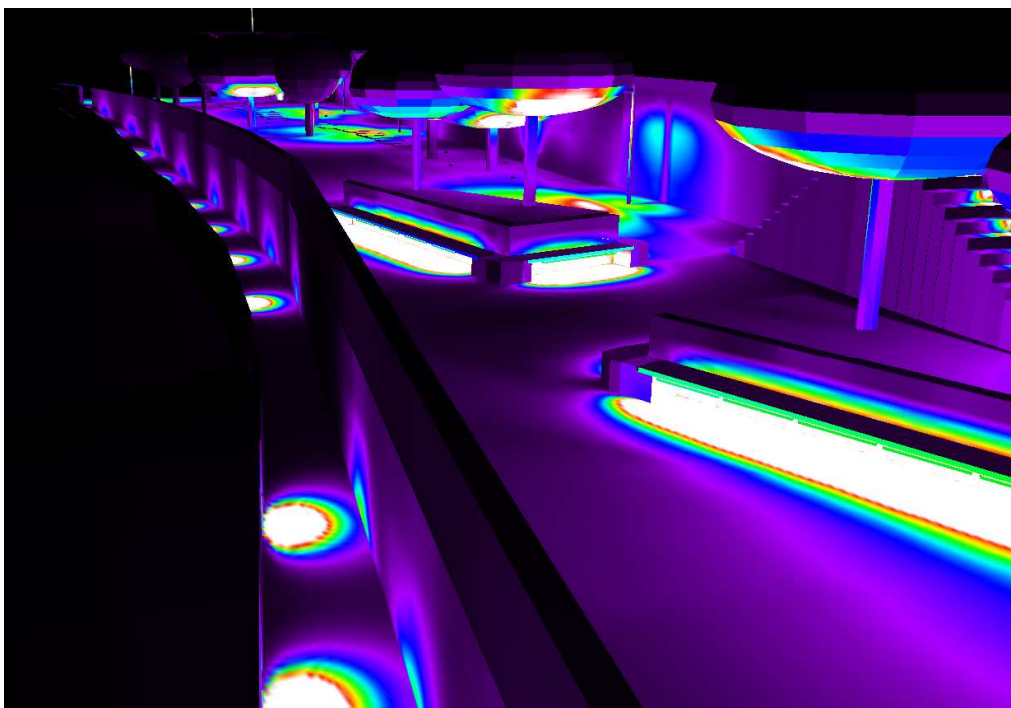
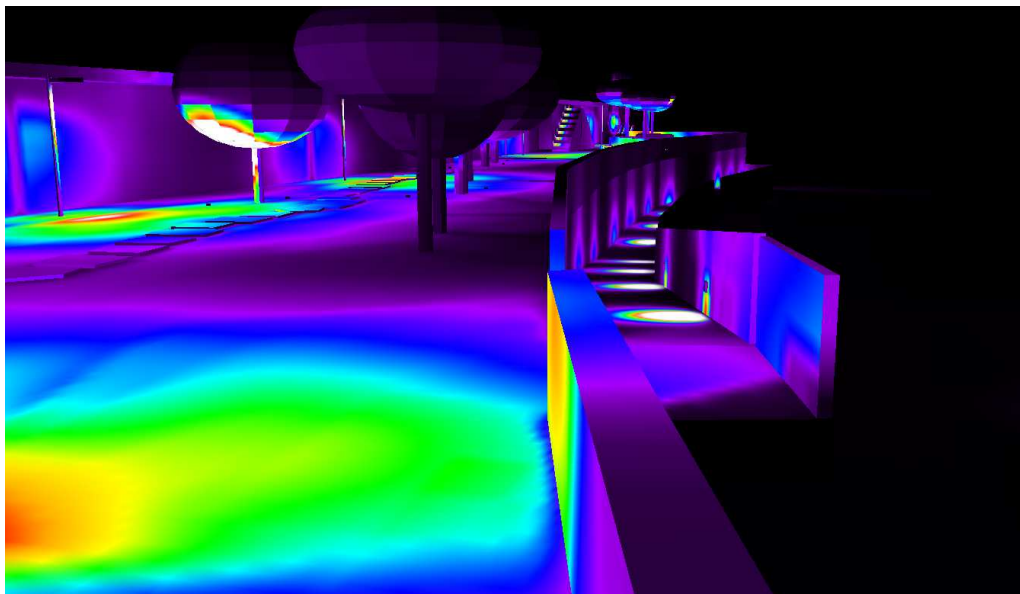


VALORI MEDI LUX



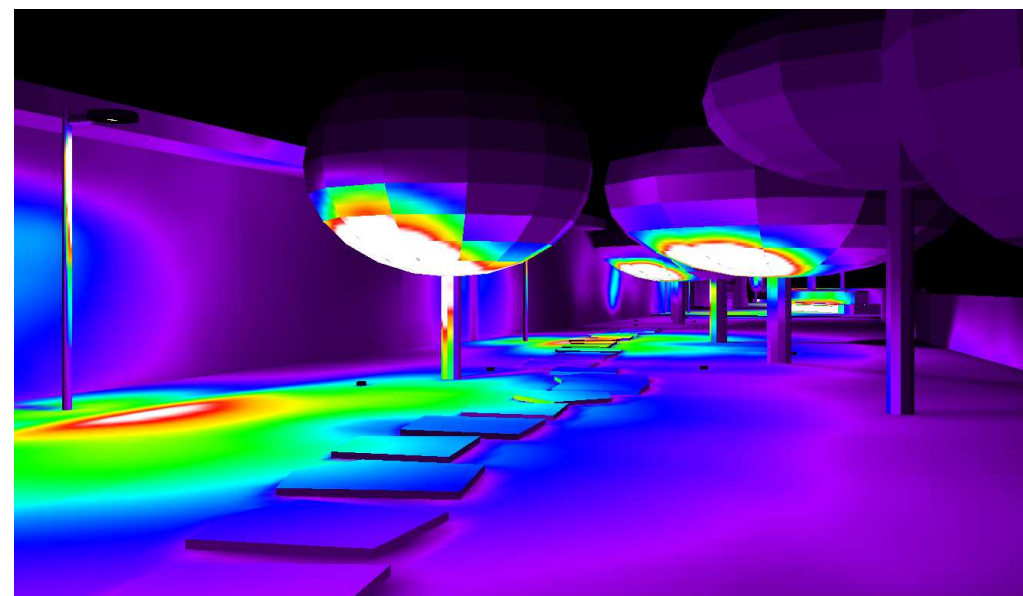
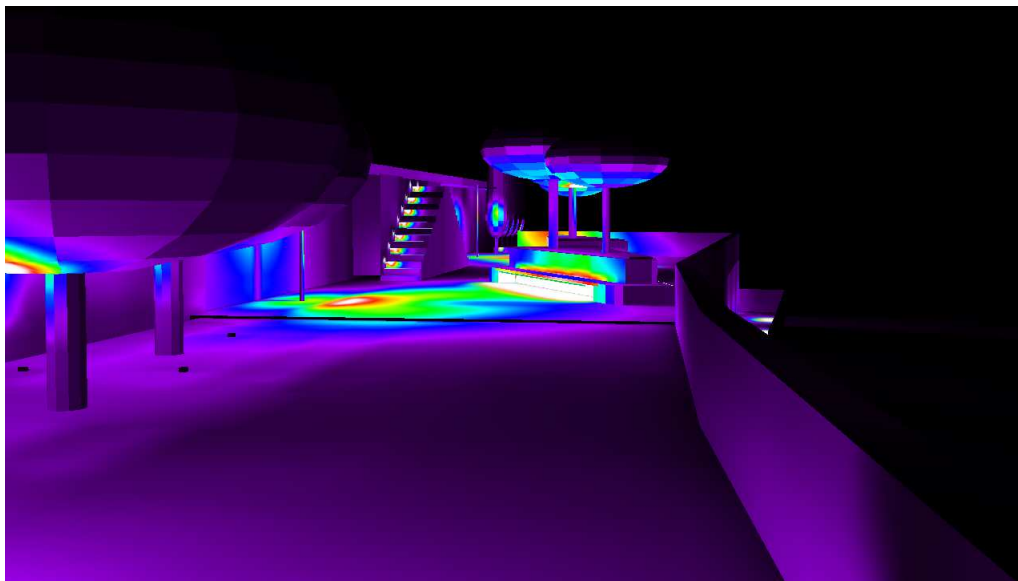
lx

VALORI MEDI LUX



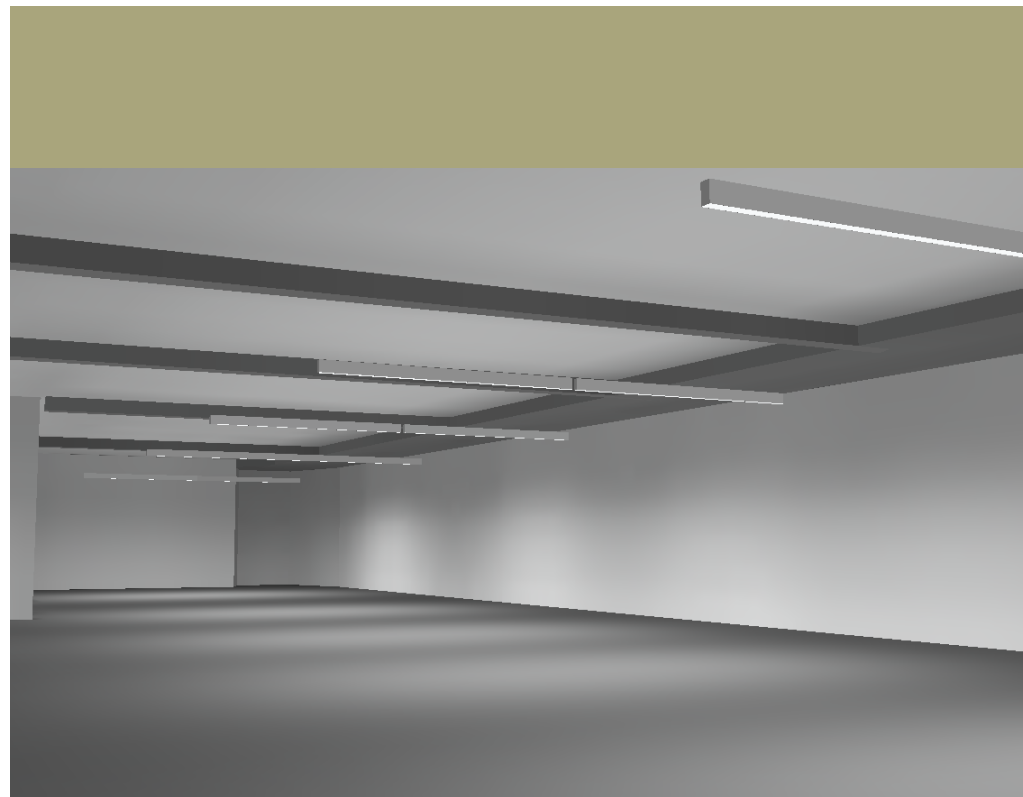
\*) ILLUMINAZIONE ARREDO URBANO SOLO  
PREDISPOSIZIONE  
lx

VALORI MEDI LUX

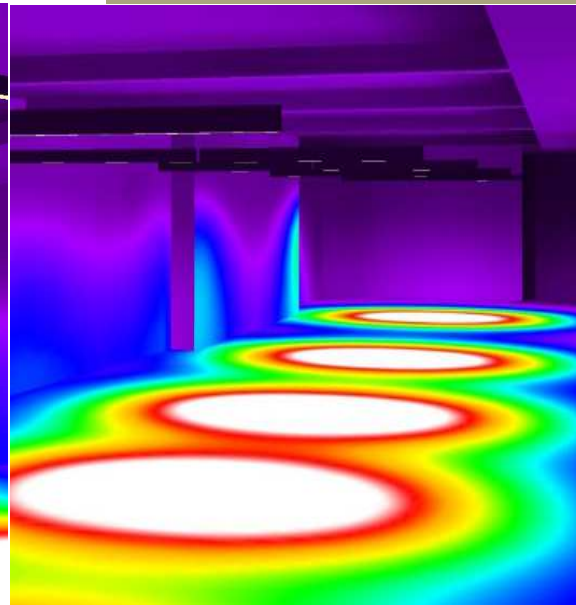
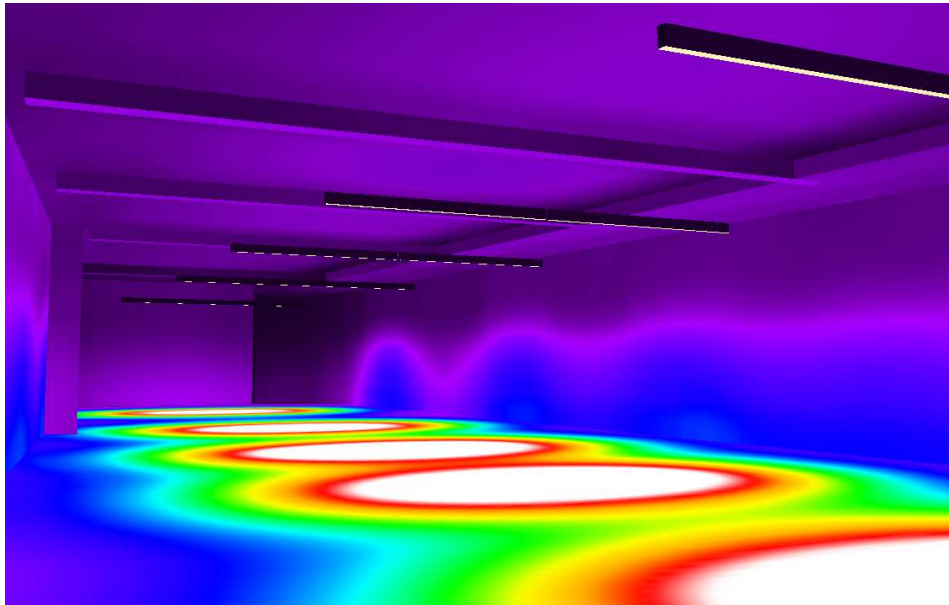


\*) ILLUMINAZIONE ARREDO URBANO SOLO  
PREDISPOSIZIONE  
lx

13. SALA POLIFUNZIONALE

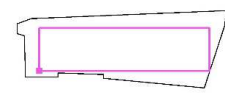


# VALORI MEDI LUX



71	244	204	107	42	42	102	328	318	110	77	209	394	198	115	266	353	137	79	184	393
92	378	469	150	51	48	130	466	455	144	83	281	565	272	146	373	521	186	97	243	658
109	448	576	191	61	55	145	527	540	175	109	315	645	325	170	428	609	225	113	273	634
111	452	603	203	64	56	144	525	549	180	109	309	649	337	171	421	621	235	114	288	635
97	402	556	189	61	52	123	450	494	163	100	271	595	314	154	379	577	220	104	233	572
80	305	432	155	54	45	97	316	359	130	84	207	444	246	126	288	440	178	87	178	427
62	149	203	98	43	38	83	144	157	80	59	112	193	131	84	148	200	105	62	100	184

Impossibile visualizzare tutti i valori calcolati.  
 Posizione della superficie nel locale:  
 Punto contrassegnato: (21.607 m, 22.777 m, 0.850 m)



Reticolo: 128 x 64 Punti

$E_m$ [lx]	$E_{min}$ [lx]	$E_{max}$ [lx]
248	34	660

